



*Fiesta  
Farm*  
1413 Cooper Lane  
Knoxville, TN 37932  
(865) 604-4863  
[spk@fiestafarm.com](mailto:spk@fiestafarm.com)  
"Follow" FiestaFarm on  
**TWITTER. Google**  
**twitter:fiestafarm**

# MINI, EVENING HORSE SHOW 2013

*presented by:*

*Fiesta  
Farm*

**JULY 22, 23, 24, 25, 2013,  
5:30-9:00 P.M.**

*Judge:*

**Riley Haynes : Maryville, TN**

*Regular member show, East Tennessee Hunter Jumper Association*

**1413 Cooper Lane \* Knoxville, TN**

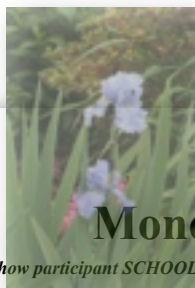
**email: [spk@fiestafarm.com](mailto:spk@fiestafarm.com) for event information.**

**"follow us" on twitter for 'day of show' updates.**

**& loads of classes for BEGINNER, ADULT, CHILDREN AND PROFESSIONAL Riders.**

**Don't miss the ETHJA Fiesta Farm: Classic Horse show September 21-22nd  
or the Halloween show. October 19-20th**

# SCHEDULE OF



## Monday

Show participant **SCHOOLING** 4:00-5:15

### Practice Ring

5:30 p.m.

01. Walk/Trot Hunter U/S
02. Walk/Trot Equitation Flat
03. Ground Rail Equitation
04. Ground Rail Hunter
05. Cross Rail Hunter
06. Cross Rail Equitation
07. Cross Rail Equitation flat
08. Cross Rail Hunter U/S

### Main Ring

*Schooling until at least*

6:30 p.m.

00. Lead Line
09. Beginner Rider Hunter
10. Beginner Rider Hunter
11. Beginner Rider Hunter U/S
12. Beginner Rider Equit. Flat
13. Beginner Rider Equit, O/F
14. Beginner Rider Equit, O/F
15. Fiesta Farm Low Hunter O/F
16. Fiesta Farm Low Hunter O/F
17. Fiesta Farm Low Hunter U/S



## Tuesday

Show participant **SCHOOLING** 4:00-5:15

### Main Ring

5:30 p.m.

18. **Red/Blue warm-up** (multiple rides allowed as time permits)
19. Mini Hunter (18" first)
20. Mini Hunter
21. Mini Hunter U/S
22. Schooling 2' Hunter
23. Schooling 2' Hunter
24. Schooling 2' Hunter U/S
25. Green Hunter (2' first)
26. Green Hunter
27. Green Hunter U/S
28. Schooling 2' 6" Hunter
29. Schooling 2' 6" Hunter
30. Schooling 2' 6" Hunter U/S
31. Low Hunter
32. Low Hunter
33. Low Hunter U/S
34. Working Hunter
35. Working Hunter
36. Working Hunter U/S



## Grill

**Open during the show**

**Set Menu each evening:**

Monday: pizza (several selections)

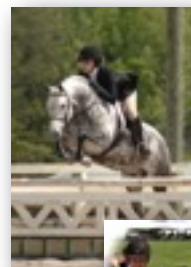
Tuesday: tea sandwiches, iced tea, homemade lemonade

Wednesday: hot dogs, brats, mac & cheese,

Thursday: enchiladas and quesadillas

**Drinks and snacks:**

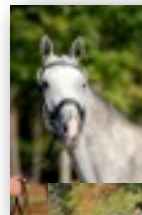
**SMOOTHIES, Cookies, candy, chips**  
Water, Soda, Iced Tea, Coffee



Stonewall Stratus



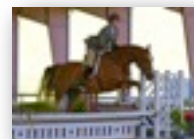
Tequila Rio



Can Do



i-Candy



Sedona



**Horses and Ponies**

Please see [fiestafarm.com](http://fiestafarm.com) for full information including videos

**For Sale:**

**Stonewall Stratus:** 14.1+ gelding. **Fancy:** jump, movement and model. **Competitive:** ribbons Pony Finals & KY 2012 res. champ zone 4 **Large Green: 2012.**

**Tequila Rio:** 16.0. Attractive, with 3rd level dressage, jumpers to meter 1.2, cute enough for hunters and brave enough to event.

**Can Do:** 14.0 gelding Children's Pony. **Athletic jumper, good mover.** Great barn manners.

**Lovin' Life:** 14.2 mare. Sweet, very fancy, well bred. **Great large prospect.**

**Lease ONLY:**

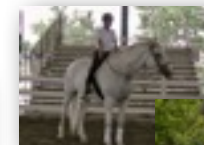
**Sedona:** 16.1. Attractive, *competitive & quiet*, beginner to 3'. 100% perfect changes.

**AVAILABLE AUGUST 1st.**

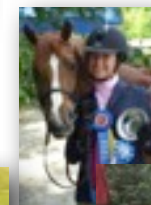
**i-Candy:** 16.2 mare. Direct, *competitive*, mannerly.

**Irish Gentleman:** 18.0 Simple, generous, **wonderful!** **AVAILABLE JULY 1ST!**

**Fiesta Adorado:** 14+ gelding. Adorable, *easy temperament*, cute mover.



Irish Gentleman



Fiesta Adorado



# CLASS SPECIFICATIONS

## HUNTER CLASSES

**MINI HUNTER:** Open to all riders on horses or ponies. Fences at 18" or 2' over regular courses with a change of direction. No penalty for trotting on course. Under-saddle class to walk/trot only. In order to retain BEGINNER RIDER status, riders **MUST** show at 18".

**BEGINNER RIDER HUNTER:** To be shown over a simple hunter course including small flower boxes, walls and gates with a change of direction on course. To be held in the main show ring. Open to beginner riders on horses or ponies who *have not shown over fences 2' or higher* prior to the horse show. There will be no penalty for trotting on course. Under-saddle class to walk/trot only. Fences 18".

**WALK/TROT HUNTER UNDER SADDLE:** Open to any rider eligible for the Beginner Rider division. To be judged as an under-saddle class. Walk/trot only. No ETHJA points.

**CROSS RAIL HUNTER:** Open to any rider. To be shown over small cross rails twice around. No ETHJA points.

**SHORT STIRRUP HUNTER:** Open to riders twelve years of age and under on ponies in their first or second year of showing over fences 2' or higher. Pony/rider combination may not cross enter the pony Hunter Division. Fences 2'.

**LONG STIRRUP HUNTER:** Open to any rider in their first or second year of showing over fences 2' or higher who is either: riding a horse; or is riding a pony and is older than twelve years of age. Riders may not cross enter the Short Stirrup Hunter Division. Fences 2'.

**CHILDREN'S HUNTER:** Open to junior riders on horses. Fences 3'.

**ADULT AMATEUR HUNTER:** Open to adult amateur riders on horses. Fences 3'.

**LOW HUNTER:** Open to all horses and ponies. Adults may ride ponies. Fences 3'.

**SCHOOLING HUNTER:** Open to all riders on horses or ponies. Fences at 2' or 2'6". This division will be split into two sections. Each horse/pony may compete in **ONLY ONE SECTION** of the class.

**PONY HUNTER:** Open to junior riders on ponies. Pony/rider combination may not cross-enter the Short Stirrup Hunter Division. Small/medium ponies to jump 2', large ponies to jump 2'6".

**SPECIAL HUNTER:** Open to children and adult amateur riders on horses and ponies. Adults may ride ponies. Fences 2', 2'6" and 2'9". This division will be split into two sections. Each horse/pony may compete in **ONLY ONE SECTION** of the class.

**GREEN HUNTER:** Open to horses and ponies in their first or second year of showing over fences exceeding 2' with any rider. Adults may ride ponies. Fences 2', 2'6" and 3'.

**REGULAR WORKING HUNTER:** Open to any horse or rider. Fences over 3'.

**FIESTA FARM LOW HUNTER:** Open to any horse, pony or rider. Adults may ride ponies. Fences 18" or 2', no oxers.

**FIESTA FARM HIGH HUNTER:** Open to any horse, pony or rider. Adults may ride ponies. Fences 2'6" or 2'9".

## EQUITATION CLASSES

**GROUND RAIL EQUITATION:** Open to any rider eligible for the beginner rider equitation division. To be shown over a simple course of ground rails twice around. No ETHJA points.

**CROSS RAIL EQUITATION:** Open to any rider. To be shown over a simple course of low cross-rails with no change of direction. No penalty for trotting on course. No ETHJA points.

**BEGINNER RIDER EQUITATION:** Open to riders eligible for Beginner Rider Hunter. No penalty for trotting on course. Fences: 18". Course to consist of simple courses with changes of direction over small boxes and gates.

**WALK/TROT EQUITATION on the flat:** Open to any rider eligible for the beginner rider equitation. No ETHJA points.

**14 & UNDER EQUITATION:** Open to riders 14 and under on horses or ponies. Fences 2' or 2'6".

**15-17/ADULT AMATEUR EQUITATION:** open to rider 15-17 or adult amateurs. Fences: 2'6" or 3'.

**ETHJA 2'6" Medal:** Open to any child or adult amateur rider on a horse. To be shown over a course of fences with at least two changes of direction. A flat phase is required and shall count 25%. Further testing from USEF 1-12 may be requested at the discretion of the judge. The top fifteen qualifiers at the end of the season will be eligible for a special ETHJA-sponsored Medal Finals. Fences: 2'6".

**ETHJA 3' MEDAL:** Open to child or adult amateur riders on horses. Same specifications as above. Fences: 3'.

**ETHJA PONY MEDAL:** Open to junior riders on ponies. Same specifications as above. Fences 2' or 2'6".

## JUMPER CLASSES

USEF rules for each class offered will be available at the secretary's table or may be viewed and printed at [www.USEF.org](http://www.USEF.org)

**Table II, Sec. 2 (a)**—The first round and first jump-off, if any, are decided by adding together the faults incurred over the course and any penalties for exceeding the Time Allowed. In the event of equality of faults after the first round, there will be one jump-off for first place only in which time will decide in the event of equality of faults.

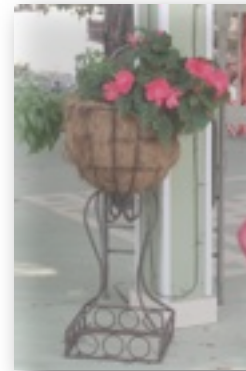
**TOUCH CLASS:** Table I, touches to count. Scored on jumping faults alone. In the likely event of equality of faults for first place, successive jump offs will be held.

**TABLE II—Classes scored on Faults and Time.** Clear Round (Table II) - The first round is decided by adding together the faults incurred over the course and any penalties for exceeding the Time Allowed. Horses with clean rounds or equal faults remain equal.

**FAULT and OUT:** (Table II, Sec. 4) Fault and Out. These competitions are timed and take place over medium sized single obstacles (combinations are not permitted). The competitor's round finishes with the first fault incurred under Table II. Points are awarded instead of faults, two points for each obstacle jumped cleanly and one point for the obstacle knocked down. The winner is the competitor who scores the greatest number of points. Time will decide in the event of equality of points.

a. An obstacle is not considered to have been jumped until the horse's forefeet have touched the ground on landing ..... b. When an obstacle is knocked down or the Time Allowed, if there is one, has been reached, a signal is sounded. The competitor must then jump the next obstacle .... c. When a fault constitutes a disobedience or fall ..... (2) With a Fixed Time Allowed which must not be set at less than 50 seconds, nor more than 60 seconds. If the competitor has jumped all the obstacles before the expiration of the Time Allowed, he starts around the course again but is not required to go back through the start markers. **\$100 prize money split \$40, \$25, \$20, \$15.**

**ELIGIBILITY:** all classes offered shall be open to all riders on horses or ponies. *See further ETHJA rules for eligibility.* Entry fee \$10 per class or \$100 for the horse show.



**Do you want to know what is happening at the horse show, as it happens????**

*"Follow Fiesta Farm" on*

**Twitter**, or look at our **web site @fiestafarm.com** on the Twitter link, or Google "Twitter;fiestafarm" for **schedule UPDATES EVERY 30 MINUTE.**

You could know: when your division will go; who was champion in the last division; the numbers or participants in the upcoming division.

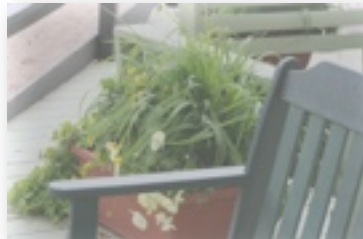
**ITS EASY! Try it!**

## RULES AND REGULATIONS

- ❖ **SCHOOLING ATTIRE** will be appropriate for all classes. Helmets, boots, britches or jodhpurs and polo shirts or long sleeved high tech riding shirts with belts should be worn. Tee shirts, tank tops, and jeans are too casual.
- ❖ **ENTRY FEES** for all classes, except those specified below, will be \$10 per class or \$100 for the entire series for each one rider/horse or pony combination.
- ❖ **NEGATIVE COGGINS TESTS** taken within twelve months must be available upon entering. Pony Cards for the Pony Division must also be available upon request.
- ❖ **USEF rules** will apply in all classes & situations as modified by local conditions or rules.
- ❖ **DOGS** and other pets should not attend the horse show.
- ❖ **STABLING** may be available upon request on the grounds for \$25 per night (3:00 p.m. through 9:00 a.m. the next day, or \$60 for the week beginning at 3:00 p.m. on Monday. Paddocks may also be available at a lower rate.
- ❖ The course will be set and **SCHOOLING** allowed before the horse show each afternoon afternoon from 4:00 p.m. until the start of the show. Afternoon schooling fee is \$10 per horse, if you will not be showing. Horses stabling at *Fiesta Farm* and/or showing at the horse show are exempt from the afternoon schooling fee.
- ❖ Two entries are required to **FILL each CLASS**. If there are insufficient entries in any class, it may be combined with another appropriate class or division.
- ❖ **MULTIPLE CARDS MAY BE OPEN DURING THE SHOW**. In order that the show run smoothly and to make the show more efficient for exhibitors, classes that “go together” for an individual exhibitor may be ridden one after the other rather than waiting until the class’s scheduled time table. However, **classes must be ridden in the correct order** as they appear in the schedule and only three classes may be running concurrently except for the Red/Blue warm up classes that, while judged, are not ranked and scored for placing. Please see the schedule for classes affected and ask the gatekeeper at the show to help you if you are unfamiliar with this concept.
- ❖ **Red/Blue** warm up classes: the judge may award, at his/her discretion, a red or blue ribbon for any warm-up round. Any ribbons awarded will be announced immediately after the round is completed. In the interest of time, **multiple rounds may be allowed only if time permits**. Please make sure that these rounds are entered, and paid for, at the secretary’s desk.

## AWARDS

- ❖ **RIBBONS** will be awarded in all regular classes through sixth place.
- ❖ Championship winners shall each receive a **RIBBON** and trophy.
- ❖ Reserve champion winners shall receive a **RIBBON**.
- ❖ **ETHJA YEAR- END AWARD** points will accrue to ETHJA members and ETHJA-recorded horses and ponies in the following HUNTER divisions: Mini, Beginner Rider, Short Stirrup, Long Stirrup, Pony, Schooling, Special, Children’s, Adult/Amateur, and Low, Green and Working. Points will also accrue in the following EQUITATION Divisions: Beginner Rider, 2’, 14 and under, 15-17, Adult Amateur, as well as in all ETHJA medal classes. Points will not accrue in the following classes : Cross Rails, Walk/Trot, Fiesta Farm Low Hunter, and the Fiesta Farm High Hunter.



# CLASSES

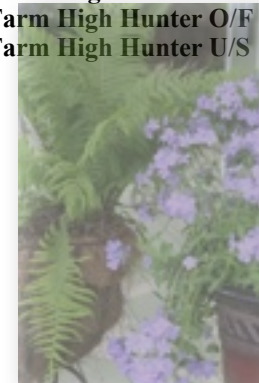
## Wednesday

Show participant **SCHOOLING 4:00-5:15**

### Main Ring

5:30 p.m.

- 37. **Red/Blue warm-up** (*multiple rides allowed as time permits*)
- 38. **2’ Special Hunter**
- 39. **2’ Special Hunter**
- 40. **2’ Special Hunter U/S**
- 41. **Short Stirrup Hunter**
- 42. **Short Stirrup Hunter**
- 43. **Short Stirrup Hunter U/S**
- 44. **Long Stirrup Hunter**
- 45. **Long Stirrup Hunter**
- 46. **Long Stirrup Hunter U/S**
- 47. **2’6” & 2’9” Special Hunter**
- 48. **2’6” & 2’9” Special Hunter**
- 49. **2’6” & 2’9” Special Hunter U/S**
- 50. **Pony Hunter**
- 51. **Pony Hunter**
- 52. **Pony Hunter U/S**
- 53. **Children’s Hunter**
- 54. **Children’s Hunter**
- 55. **Children’s Hunter U/S**
- 56. **Adult Amateur Hunter**
- 57. **Adult Amateur Hunter**
- 58. **Adult Amateur Hunter U/S**
- 59. **Fiesta Farm High Hunter O/F**
- 60. **Fiesta Farm High Hunter O/F**
- 61. **Fiesta Farm High Hunter U/S**



## Thursday

Show participant **SCHOOLING 4:00-5:15**

### Main Ring

5:30 p.m.

- 62. **2’ Equitation Flat**
- 63. **2’ Equitation**
- 64. **2’ Equitation**
- 65. **14 & under Equitation Flat**
- 66. **14 & under Equitation O/F**
- 67. **14 & under Equitation O/F**
- 68. **ETHJA Pony Medal**
- 69. **ETHJA 2’6” Medal**
- 70. **15-17 Equitation Flat**
- 71. **15-17 Equitation O/F**
- 72. **15-17 Equitation O/F**
- 73. **ETHJA 3’ Medal**
- 74. **Adult Amateur Equit. Flat**
- 75. **Adult Amateur Equit. O/F**
- 76. **Adult Amateur Equit. O/F**

### Not to start before

7:00 p.m.

- 77. **Jumper: 2’**  
TABLE II— scored on Faults and Time
- 78. **Jumper: 2’3”**  
TABLE 1 (d) – scored on touches, etc.
- 79. **Jumper: 2’6”**  
TABLE II, Sec. 2 (a/b) – time first jump off
- 80. **Jumper: 3’**  
TABLE 1 (d) – scored on touches, etc.
- 81. **Jumper: 3’3”**  
TABLE II, Sec. 2 (a/b) – time first jump off
- 82. **Jumper: FAULT & OUT 3’6”**  
TABLE II, Sec. 4

### RAIN date: FRIDAY July 26th.

In case of severe thunderstorms or significant rain, that day’s show will be held on Friday. **Check Twitter for updates and confirmation on show days.**